

PART OF THE SOUTHEAST QUARTER OF SECTION 36, TOWNSHIP 17 NORTH, RANGE 19 EAST, W.M.



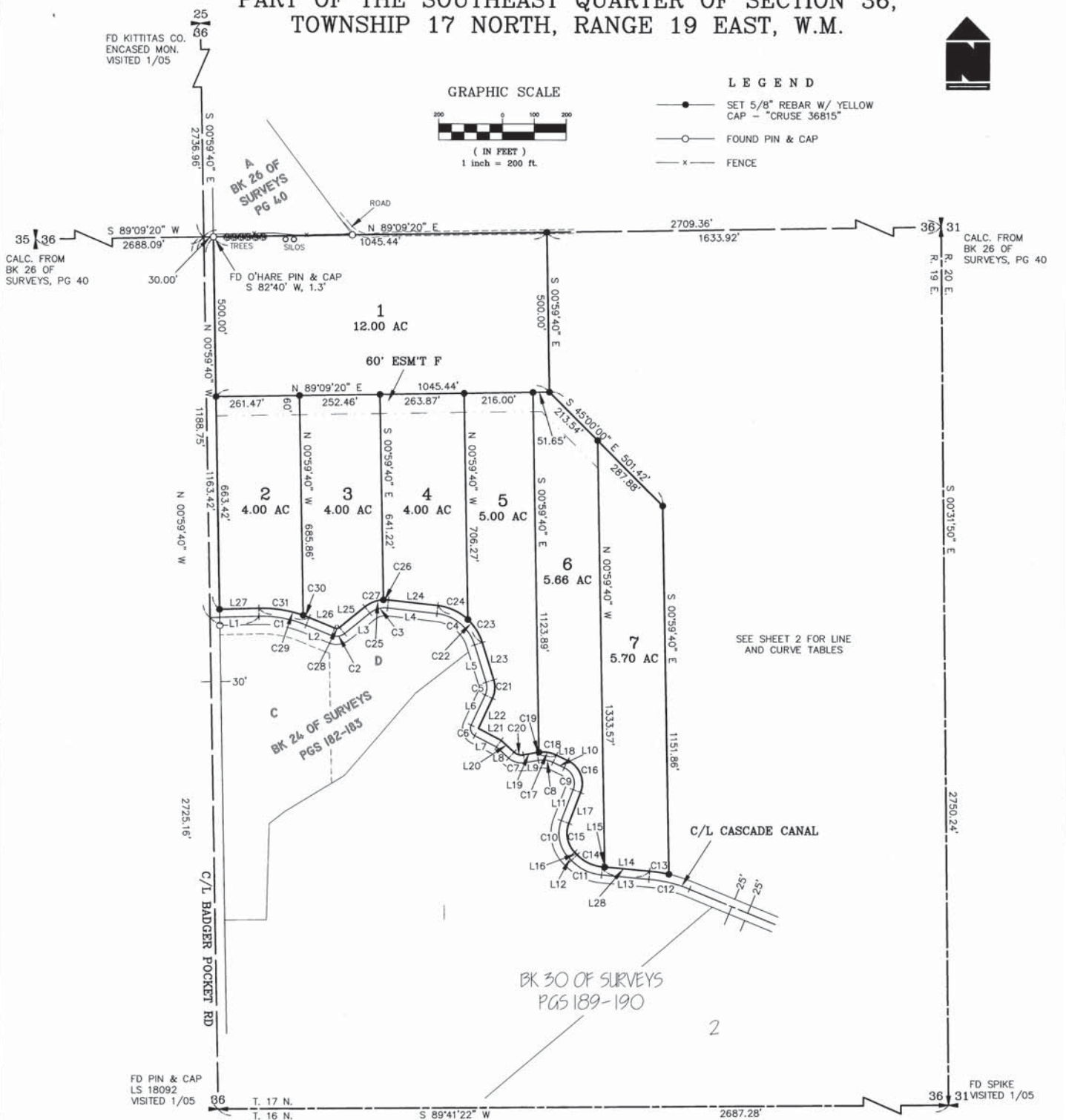
LEGEND

- SET 5/8" REBAR W/ YELLOW CAP - "CRUSE 36815"
- FOUND PIN & CAP
- x — FENCE

GRAPHIC SCALE



(IN FEET)
1 inch = 200 ft.



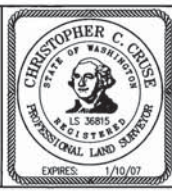
SEE SHEET 2 FOR LINE AND CURVE TABLES

	X	X
	X	X

SHEET 1 OF 2

AUDITOR'S CERTIFICATE
 Filed for record this 20TH day of JANUARY, 2005, at 12:25 P.M., in Book 30 of Surveys at page(s) 232 at the request of Cruse & Associates.
 Judy Prew BY: *J. Stebbins, Deputy*
 KITTITAS COUNTY AUDITOR - INTERIM Auditor

SURVEYOR'S CERTIFICATE
 This map correctly represents a survey made by me or under my direction in conformance with the requirements of the Survey Recording Act of the request of OLE FJELLSTAD in JANUARY of 2005.
Chris Cruse
 CHRISTOPHER C. CRUSE
 Professional Land Surveyor
 JANUARY 20, 2005
 DATE
 License No. 36815



CRUSE & ASSOCIATES
 PROFESSIONAL LAND SURVEYORS
 217 East Fourth Street P.O. Box 959
 Ellensburg, WA 98926 (509) 962-8242
FJELLSTAD PROPERTY

30-232